

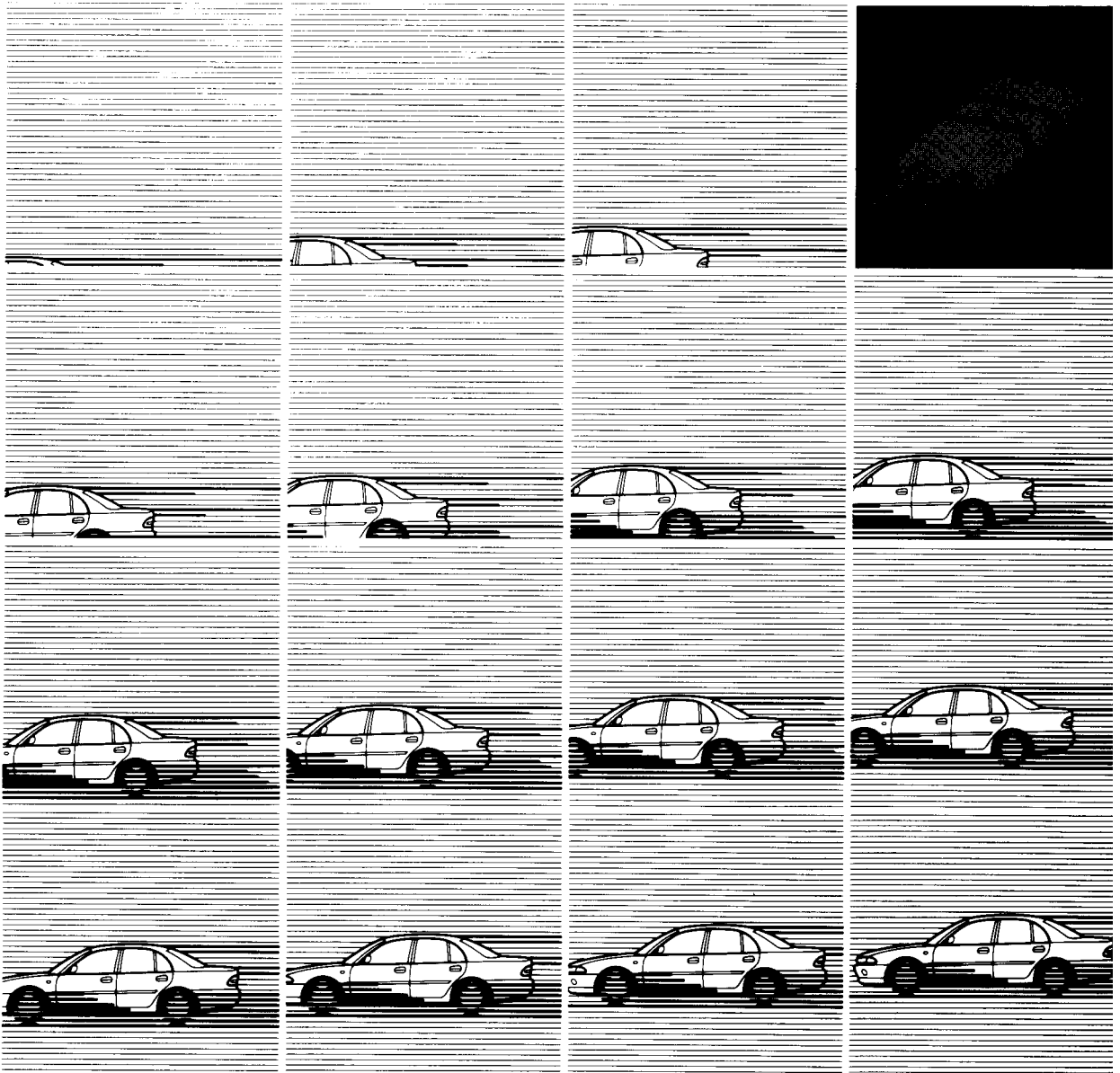


Workshop Manual

electrical wiring

SUPPLEMENT

MITSUBISHI GALANT '95



Pub. No. PHDE9220-C

MITSUBISHI GALANT GALANT HATCHBACK

ELECTRICAL WIRING SUPPLEMENT

FOREWORD

This publication is a supplement to the Electrical Wiring Manual Pub. No. PHDE9220-B and contains only additions and changes to the original issue. It is recommended that all service mechanics engaged in the servicing of the vehicles refer to the following publications as well as this manual.

TECHNICAL INFORMATION MANUAL
PYDE 9203

WORKSHOP MANUAL
ENGINE GROUP PWEE□□□□
(Loose-leaf edition)
CHASSIS GROUP PWDE9211
(Loose-leaf edition)
PWDE9211-C
(Supplement)
BODY REPAIR MANUAL PBDE9210
ELECTRICAL WIRING PHDE9220-B
(Loose-leaf edition)

PARTS CATALOGUE B608F002A□
B608F004A□
B608F005A□

All information, illustrations and product descriptions contained in this manual are correct as of time of publication. We, however, reserve the right to make changes at any time without prior notice or obligation.



GROUP INDEX

OUTLINE OF CHANGES



HOW TO READ THE
WIRING DIAGRAMS



CIRCUIT DIAGRAM



HOW TO USE THIS MANUAL

CONTENTS

The preceding page contains GROUP INDEX which lists the group title and group number.

PAGE NUMBERS

All page numbers consist of two sets of digits separated by a dash. The digits preceding the dash identify the number of the group. The digits following the dash represent the consecutive page number within the group. The page numbers can be found on the top left or right of each page.

OPERATION AND TROUBLESHOOTING HINTS

In the GROUP 4 circuit diagrams, the operation and troubleshooting hints are given on the previous page or following page for each circuit where necessary.

OUTLINE OF CHANGES

CIRCUIT DIAGRAM	2
TABLE OF CIRCUIT DIAGRAMS	2

CIRCUIT DIAGRAM

Circuit diagrams			Description of changes
Main title	Subtitle	Ref. page	
AIR PURIFIER	Without full automatic air conditioner	4-2	The circuits inside the air purifier have been changed.
	With full automatic air conditioner	4-3	
ANTI-SKID BRAKE SYSTEM	2WD <L.H. drive vehicles>	4-4	The pedal stroke sensor has been abolished to correspond to changes in the system. <Vehicles without TCL>
	2WD <R.H. drive vehicles>	4-10	

TABLE OF CIRCUIT DIAGRAMS

This table of circuit diagrams indicates those circuits in which changes and/or additions, etc. have been made; the circuits are here listed in the sequence in which they are presented in the wiring diagrams. Please use this table for reference when following maintenance or repair procedures.

NOTE

- (1) The [●] symbol indicates a circuit in which a change and/or addition has been made.
- (2) The [○] symbol indicates a circuit in which no change has been made. For details please refer to the wiring diagr.

Main circuit	Circuit classifications	Pub. No. PHDE9220-B (Loose-leaf edition)	Pub. No. PHDE9220-C (Supplement)
JUNCTION BLOCK	—	○	○
CENTRALIZED JUNCTION	—	○	○
POWER DISTRIBUTION SYSTEM	—	○	○
STARTING SYSTEM	Petrol-powered vehicles without theft-alarm system	○	○
	Diesel-powered vehicles without theft-alarm system	○	○
	Petrol-powered vehicles with theft-alarm system	○	○
	Diesel-powered vehicles with theft-alarm system	○	○
IGNITION SYSTEM	4G93, 4G63	○	○
	6A12, 6G73 <L.H. drive vehicles>	○	○
	6A12, 6G73 <R.H. drive vehicles>	○	○
CHARGING SYSTEM	4G93	○	○
	4G63	○	○
	6A12	○	○
	6G73	○	○
	4D68	○	○
GLOW SYSTEM	—	○	○
MPI SYSTEM	4G93, 4G63	○	○
	6A12, 6G73	○	○
COOLING SYSTEM	4G93, 4G63-2WD	○	○
	4G63-4WD	○	○
	6A12-M/T	○	○
	6A12-A/T, 6G73	○	○
	4D68	○	○

Main circuit	Circuit classifications	Pub. No. PHDE9220-B (Loose-leaf edition)	Pub. No. PHDE9220-C (Supplement)
ELC 4-SPEED AUTOMATIC TRANSMISSION	—	○	○
HEADLAMP	L.H. drive vehicles without daytime running lamp	○	○
	L.H. drive vehicles with daytime running lamp	○	○
	R.H. drive vehicles without dim-dip lamp	○	○
	R.H. drive vehicles with dim-dip lamp	○	○
HEADLAMP LEVELING SYSTEM	L.H. drive vehicles	○	○
	R.H. drive vehicles	○	○
TAIL LAMP, POSITION LAMP AND LICENCE PLATE LAMP	Sedan <L.H. drive vehicles>	○	○
	Sedan <R.H. drive vehicles>	○	○
	Hatchback <L.H. drive vehicles>	○	○
	Hatchback <R.H. drive vehicles>	○	○
FRONT FOG LAMP	L.H. drive vehicles	○	○
	R.H. drive vehicles	○	○
REAR FOG LAMP	L.H. drive vehicles	○	○
	R.H. drive vehicles	○	○
ROOM LAMP	Vehicles without ETACS	○	○
	Vehicles with ETACS	○	○
LUGGAGE COMPARTMENT LAMP	Vehicles without theft-alarm system	○	○
	Vehicles with theft-alarm system	○	○
DOOR LAMP	L.H. drive vehicles	○	○
	R.H. drive vehicles	○	○
IGNITION KEY CYLINDER ILLUMINATION LAMP	Vehicles without ETACS	○	○
	Vehicles with ETACS	○	○
TURN-SIGNAL LAMP AND HAZARD LAMP	—	○	○
STOP LAMP	—	○	○
BACK-UP LAMP	M/T	○	○
	A/T	○	○
HORN	Vehicles without SRS	○	○
	Vehicles with SRS	○	○
METER AND GAUGE	Petrol-powered vehicles	○	○
	Diesel-powered vehicles	○	○
BRAKE WARNING LAMP	—	○	○
FUEL FILTER WARNING LAMP	—	○	○
OIL PRESSURE WARNING LAMP	—	○	○
FUEL WARNING LAMP	—	○	○
ENGINE OIL LEVEL WARNING LAMP	—	○	○
CHARGE WARNING LAMP	—	○	○
POWER WINDOWS	L.H. drive vehicles	○	○
	R.H. drive vehicles	○	○

OUTLINE OF CHANGES – Table of Circuit Diagrams

Main circuit	Circuit classifications	Pub. No. PHDE9220-B (Loose-leaf edition)	Pub. No. PHDE9220-C (Supplement)
CENTRAL DOOR LOCKING SYSTEM	L.H. drive vehicles without power windows	○	○
	R.H. drive vehicles without power windows	○	○
	L.H. drive vehicles with power windows	○	○
	R.H. drive vehicles with power windows	○	○
HEATER AND MANUAL AIR CONDITIONER	Petrol-powered vehicles <2WD>	○	○
	Petrol-powered vehicles <4WD>	○	○
	Diesel-powered vehicles	○	○
FULL AUTOMATIC AIR CONDITIONER	6A12-M/T	○	○
	6A12-A/T	○	○
	6G73	○	○
AIR PURIFIER	Without full automatic air conditioner	○	●
	With full automatic air conditioner	○	●
WINDSHIELD WIPER AND WASHER	—	○	○
REAR WIPER AND WASHER	Sedan <L.H. drive vehicles>	○	○
	Sedan <R.H. drive vehicles>	○	○
	Hatchback <L.H. drive vehicles>	○	○
	Hatchback <R.H. drive vehicles>	○	○
HEADLAMP WASHER	L.H. drive vehicles	○	○
	R.H. drive vehicles	○	○
DEFOGGER AND DOOR MIRROR HEATER	L.H. drive vehicles without ETACS	○	○
	R.H. drive vehicles without ETACS	○	○
	L.H. drive vehicles with ETACS	○	○
	R.H. drive vehicles with ETACS	○	○
REMOTE CONTROLLED MIRROR	L.H. drive vehicles	○	○
	R.H. drive vehicles	○	○
RADIO AND TAPE PLAYER	Pole antenna <Sedan>	○	○
	Pole antenna <Hatchback>	○	○
	Motor antenna <Sedan>	○	○
	Motor antenna <Hatchback>	○	○
CLOCK	—	○	○
CIGARETTE LIGHTER	—	○	○
ELECTRONIC CONTROLLED POWER STTERING	—	○	○
ACTIVE-ELECTRONIC CONTROLLED SUSPENSION	L.H. drive vehicles	○	○
	R.H. drive vehicles	○	○
ELECTRONIC CONTROLLED SUSPENSION	L.H. drive vehicle	○	○
	R.H. drive vehicles	○	○
ACTIVE-4WS CONTROL SYSTEM	L.H. drive vehicles	○	○
	R.H. drive vehicles	○	○

Main circuit	Circuit classifications	Pub. No. PHDE9220-B (Loose-leaf edition)	Pub. No. PHDE9220-C (Supplement)
ANTI-SKID BRAKE SYSTEM	2WD <L.H. drive vehicles>	○	●
	2WD <R.H. drive vehicles>	○	●
	4WD <L.H. drive vehicles>	○	○
	4WD <R.H. drive vehicles>	○	○
FUZZY-TRACTION CONTROL SYSTEM	L.H. drive vehicles	○	○
	R.H. drive vehicles	○	○
AUTO-CRUISE CONTROL SYSTEM	SOHC	○	○
	DOHC	○	○
POWER SEAT	L.H. drive vehicles	○	○
	R.H. drive vehicles	○	○
HEATED SEAT	—	○	○
SUNROOF	—	○	○
LIGHITING MONITOR BUZZER	L.H. drive vehicles without ETACS	○	○
	R.H. drive vehicles without ETACS	○	○
	L.H. drive vehicles with ETACS	○	○
	R.H. drive vehicles with ETACS	○	○
SUPPLEMENTAL RESTRAINT SYSTEM (SRS)	Petrol-powered vehicles <L.H. drive vehicles>	○	○
	Petrol-powered vehicles <R.H. drive vehicles>	○	○
	Diesel-powered vehicles <L.H. drive vehicles>	○	○
	Diesel-powered vehicles <R.H. drive vehicles>	○	○
THEFT-ALARM SYSTEM	—	○	○

1 HOW TO READ THE WIRING DIAGRAMS

MODELS	1-2
--------------	-----

MODELS

Sedan

Model code		Engine model	Transmission model	Fuel supply system
E52A	SNJEQL6/R6	4G93 (1,834 mℓ)	F5M22 (2WD-5M/T)	MPI
	SNHEQL6/R6			
	SNJESL6			
	SNHESL6		F4A22 (2WD-4A/T)	
	SRHEQL6/R6			
	SRHESL6			
E55A	SNJEQL6/R6	4G63 (1,997 mℓ)	F5M22 (2WD-5M/T)	
	SNHEQL6/R6		F4A22 (2WD-4A/T)	
	SRHEQL6/R6			
E54A	SNGMQL6/R6	6A12 (1,999 mℓ)	F5M31 (2WD-5M/T)	
	SRGMQL6/R6		F4A23 (2WD-4A/T)	
E57A	SNJFL6/R6	4D68 (1,998 mℓ) with intercooler and turbocharger	F5M31 (2WD-5M/T)	
	SNHFL6/R6			
	SNHFQL6			
E75A	SNHEQL6	4G63 (1,997 mℓ)	W5M31 (4WD-5M/T)	MPI
E88A	SNGMQL6	6G73 (2,497 mℓ)	W5M33 (4WD-5M/T)	
E52A	SRHEQL6B	4G93 (1,834 mℓ)	F4A22 (2WD-4A/T)	
	SNJEQL6B			
E55A	SRHEQL6B	4G63 (1,997 mℓ)		

Hatchback

Model code		Engine model	Transmission model	Fuel supply system
E52A	LNJEQL6/R6	4G93 (1,834 mℓ)	F5M22 (2WD-5M/T)	MPI
	LNHEQL6/R6			
	LNJESL6		F4A22 (2WD-4A/T)	
	LNHESL6			
	LRHEQL6/R6			
	LRHESL6			
E55A	LNJEQL6/R6	4G63 (1,997 mℓ)	F5M22 (2WD-5M/T)	
	LNHEQL6/R6		F4A22 (2WD-4A/T)	
	LRHEQL6/R6			
E54A	LNGMQL6/R6	6A12 (1,999 mℓ)	F5M31 (2WD-5M/T)	
	LRGMQL6/R6		F4A23 (2WD-4A/T)	
E57A	LNJFL6/R6	4D68 (1,998 mℓ) with intercooler and turbocharger	F5M31 (2WD-5M/T)	Diesel fuel injection
	LNHFL6/R6			
E75A	LNHEQL6	4G63 (1,997 mℓ)	W5M31 (4WD-5M/T)	MPI
E88A	LNGMQL6/R6	6G73 (2,497 mℓ)	W5M33 (4WD-5M/T)	

4 CIRCUIT DIAGRAM

AIR PURIFIER

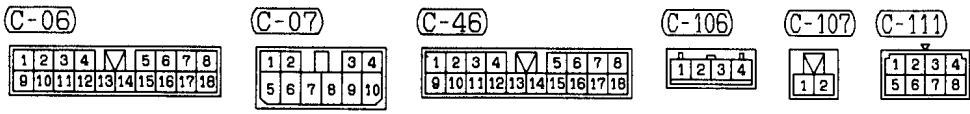
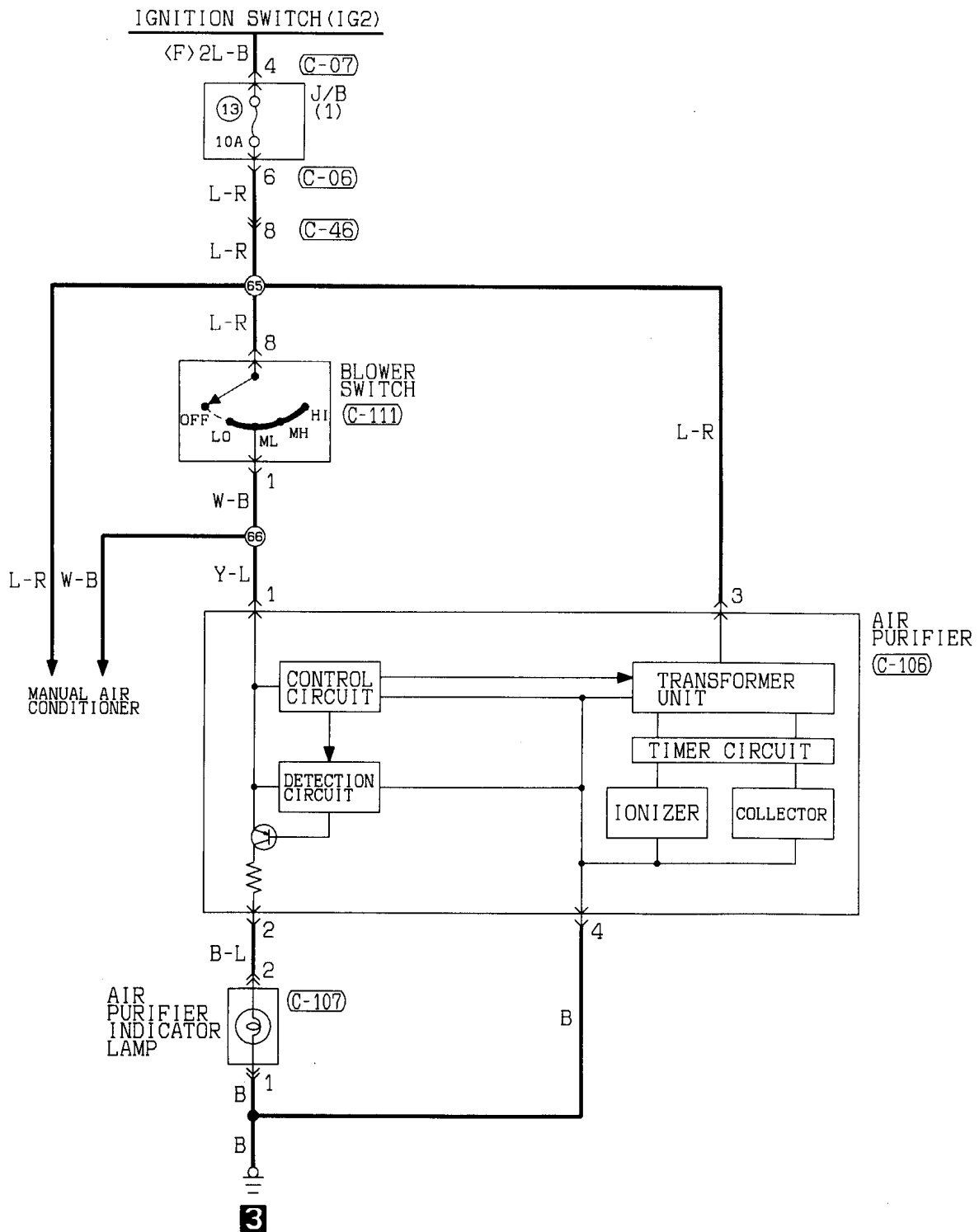
- Without full automatic air conditioner 4-2
- With full automatic air conditioner 4-3

ANTI-SKID BRAKE SYSTEM

- 2WD <L.H. drive vehicles> 4-4
- 2WD <R.H. drive vehicles> 4-10

AIR PURIFIER

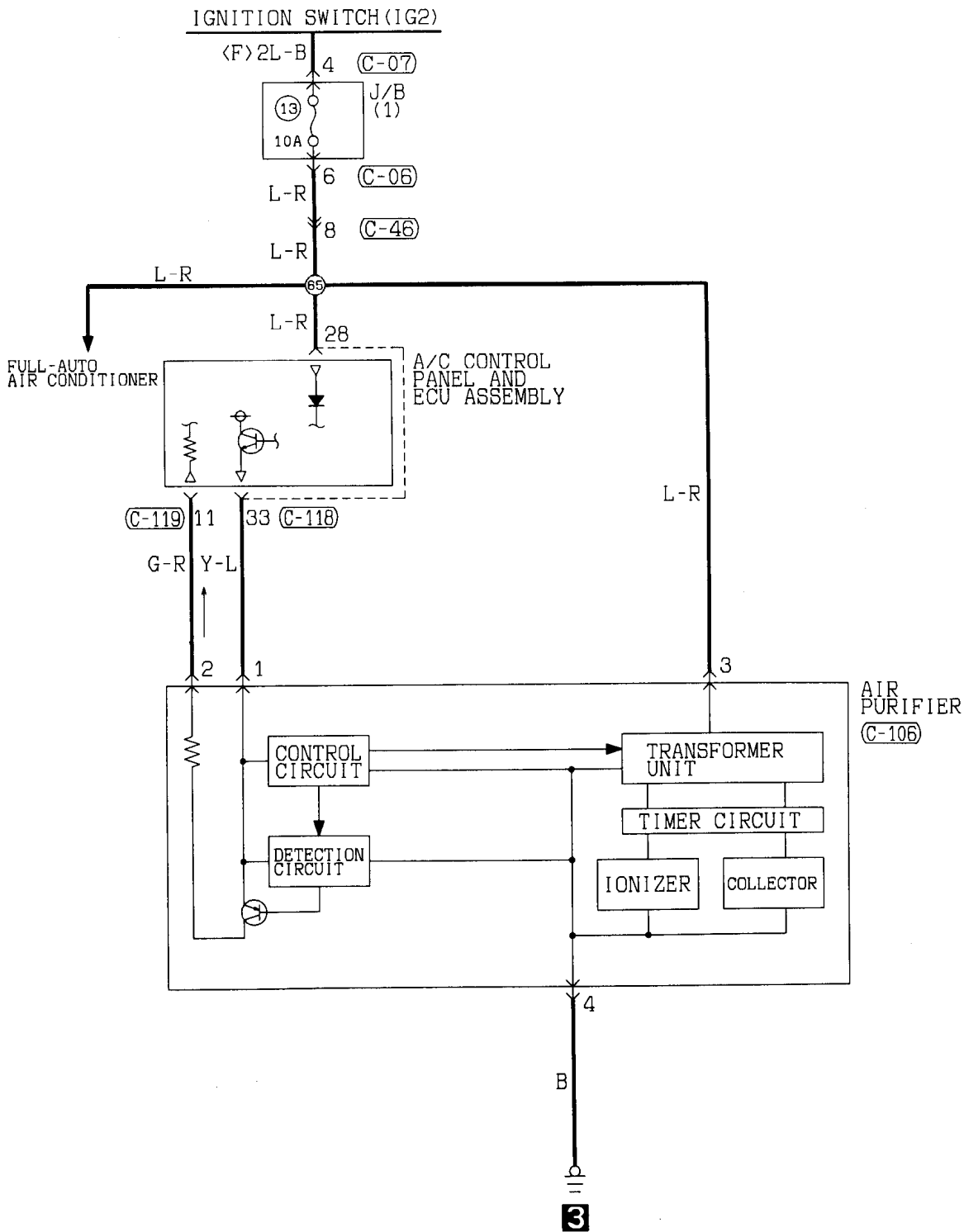
Without full automatic air conditioner



Wire colour code
 B:Black LG:Light green G:Green L:Blue W:White Y:Yellow SB:Sky blue
 BR:Brown O:Orange GR:Gray R:Red P:Pink V:Violet

AIR PURIFIER

With full automatic air conditioner



(C-06)

1	2	3	4	5	6	7	8		
9	10	11	12	13	14	15	16	17	18

(C-07)

1	2	3	4		
5	6	7	8	9	10

(C-46)

1	2	3	4	5	6	7	8		
9	10	11	12	13	14	15	16	17	18

(C-106)

1	2	3	4
---	---	---	---

(C-118)

21	22	23	24	25	26	27	28
29	30	31	32	33	34	35	36

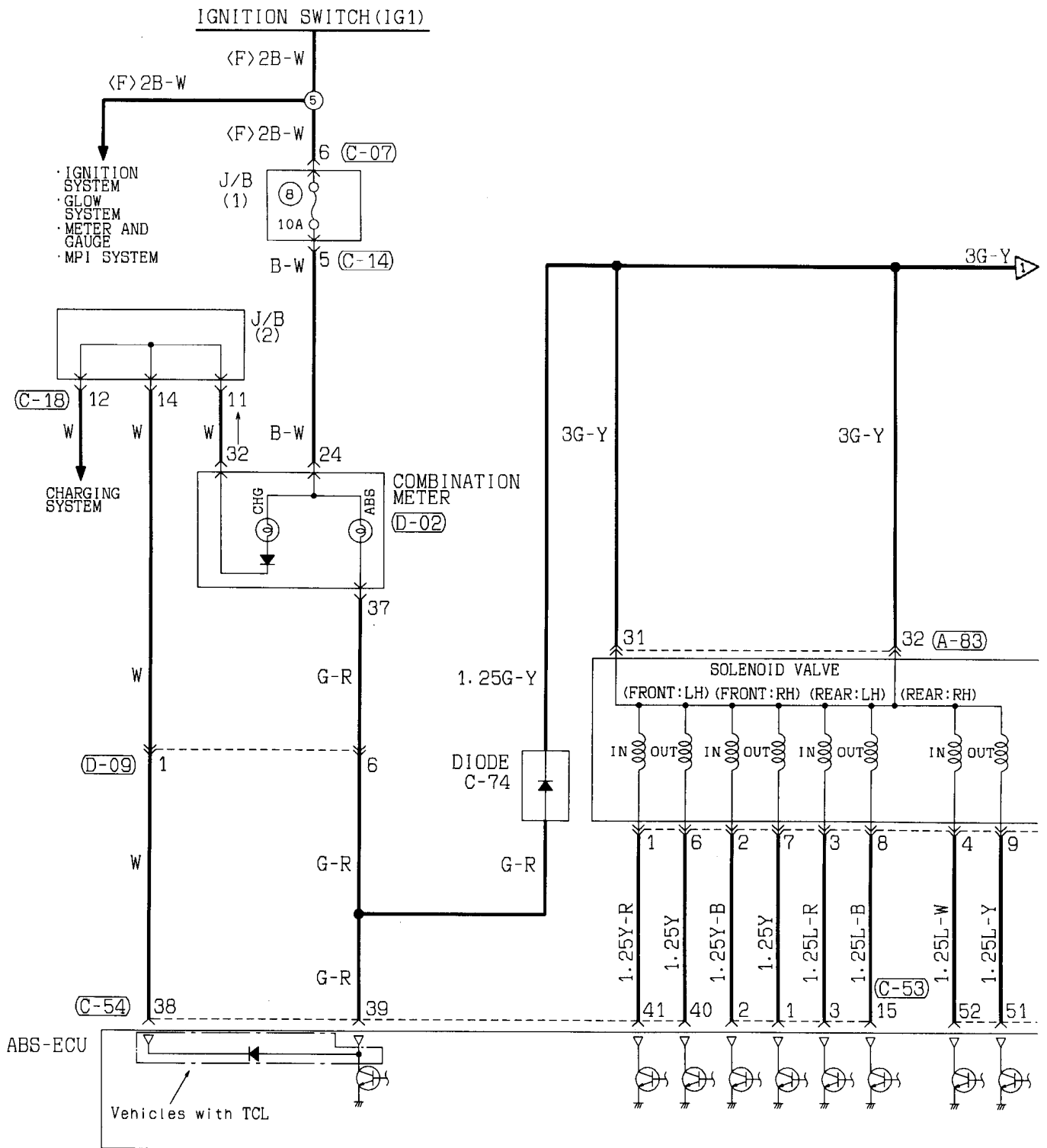
(C-119)

1	2	3	4	5	6	7	8	9	10
11	12	13	14	15	16	17	18	19	20

Wire colour code

B:Black LG:Light green G:Green L:Blue W:White Y:Yellow SB:Sky blue
 BR:Brown O:Orange GR:Gray R:Red P:Pink V:Violet

ANTI-SKID BRAKE SYSTEM
2WD<L. H. drive vehicles>



(A-83)

(C-07)

(C-14)

(C-18)

(C-53)

(C-54)

31	32
----	----

1	2	3	4
5	6	7	8
9	10		

1	2	3	4	5	6	7	8	9	10
11	12	13	14	15	16	17	18	19	20
21	22								

1	2	3	4	5	6	7	8	9	10
11	12	13	14	15	16	17	18	19	20
21	22								

1	2	3	4	5	6	7	8	9	10	11	12	13
14	15	16	17	18	19	20	21	22	23	24	25	26

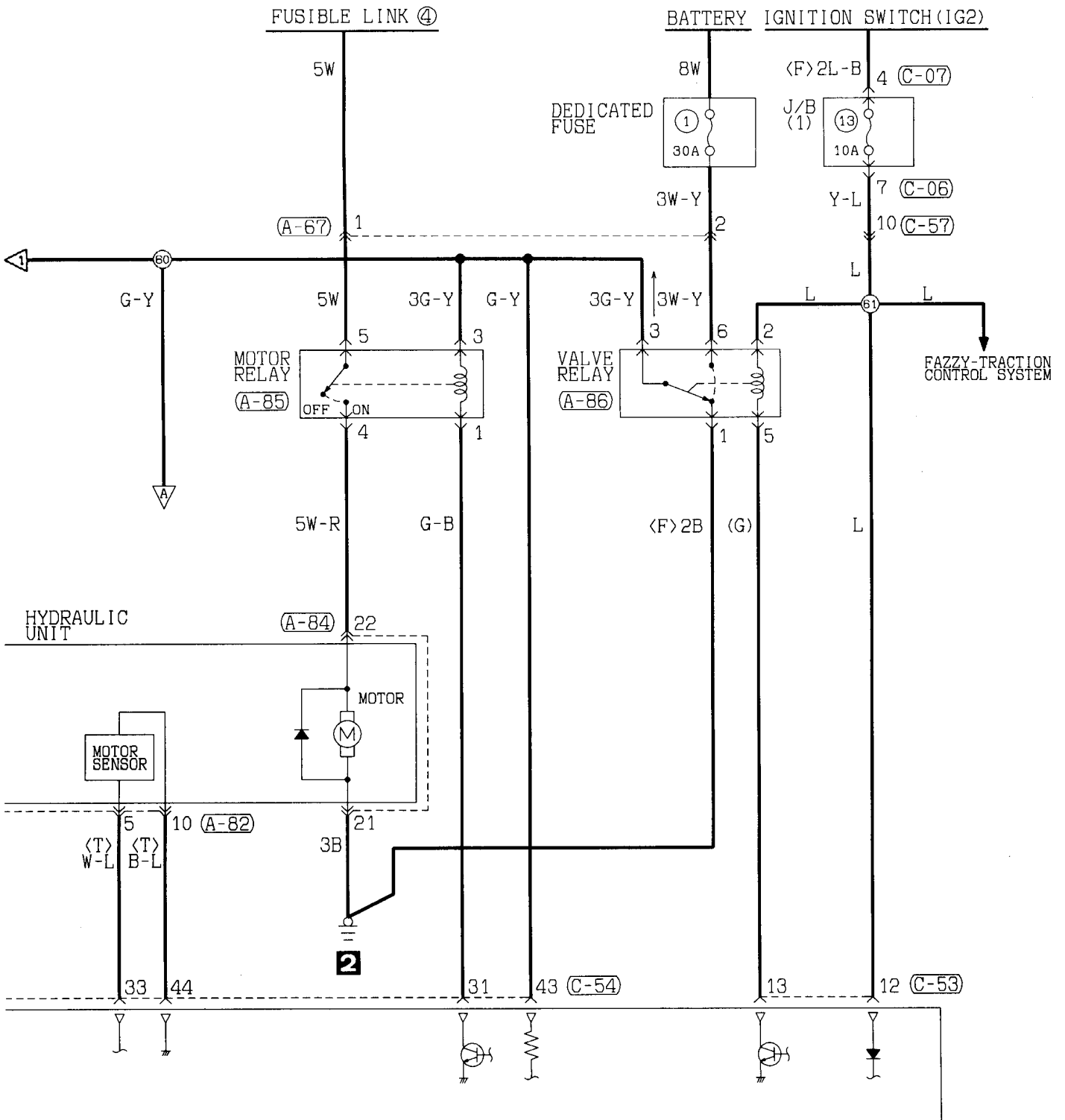
31	32	33	34	35	36	37	38	39	40	41
42	43	44	45	46	47	48	49	50	51	52

(D-02)

(D-09)

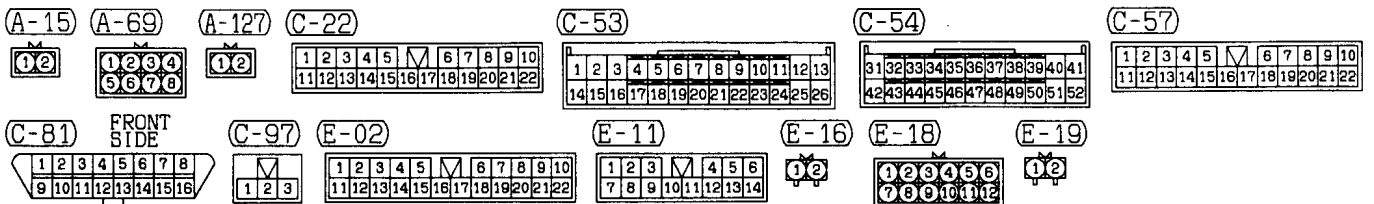
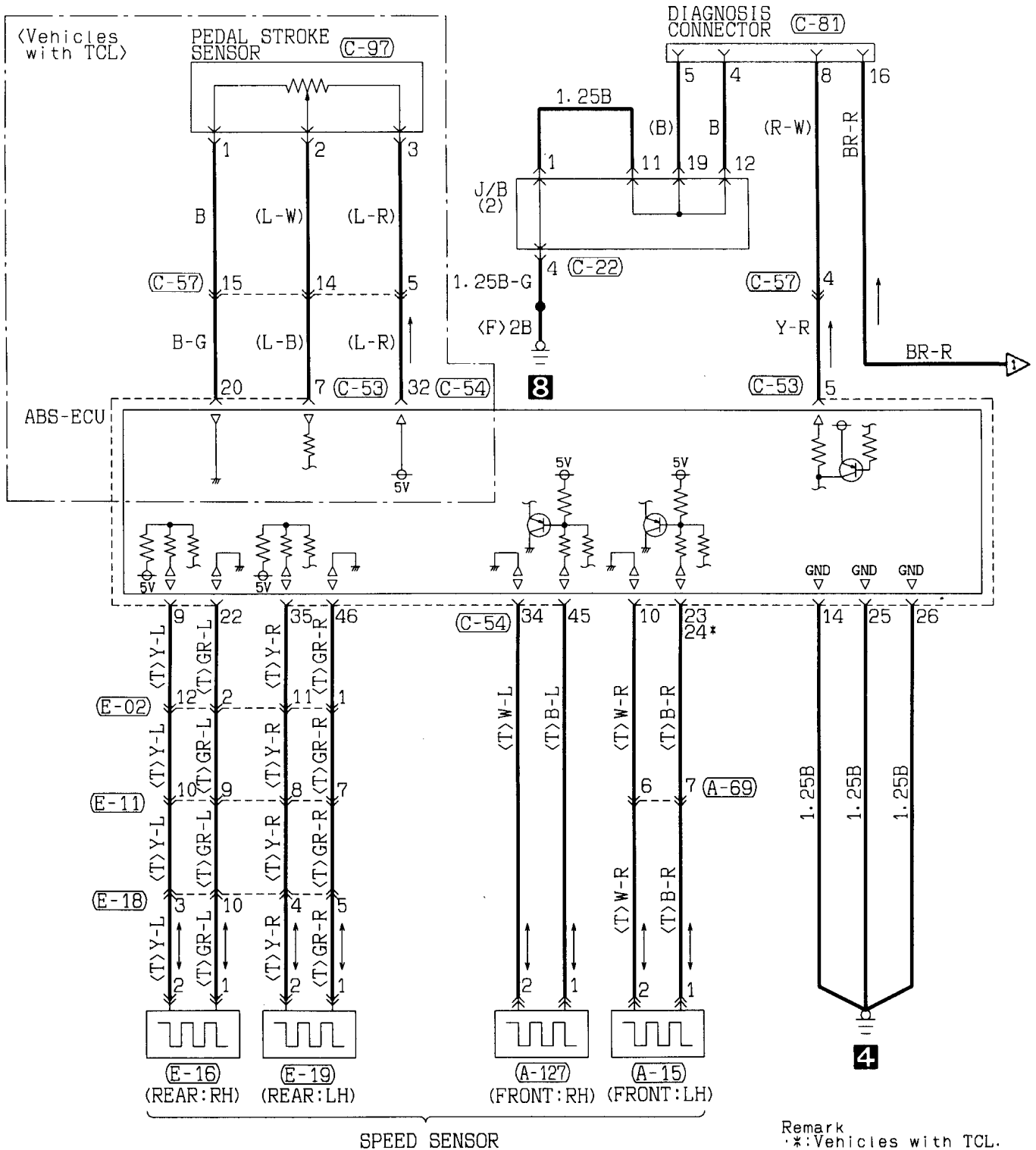
21	22	23	24	25	26	27	28
29							
30	31	32	33	34	35	36	37

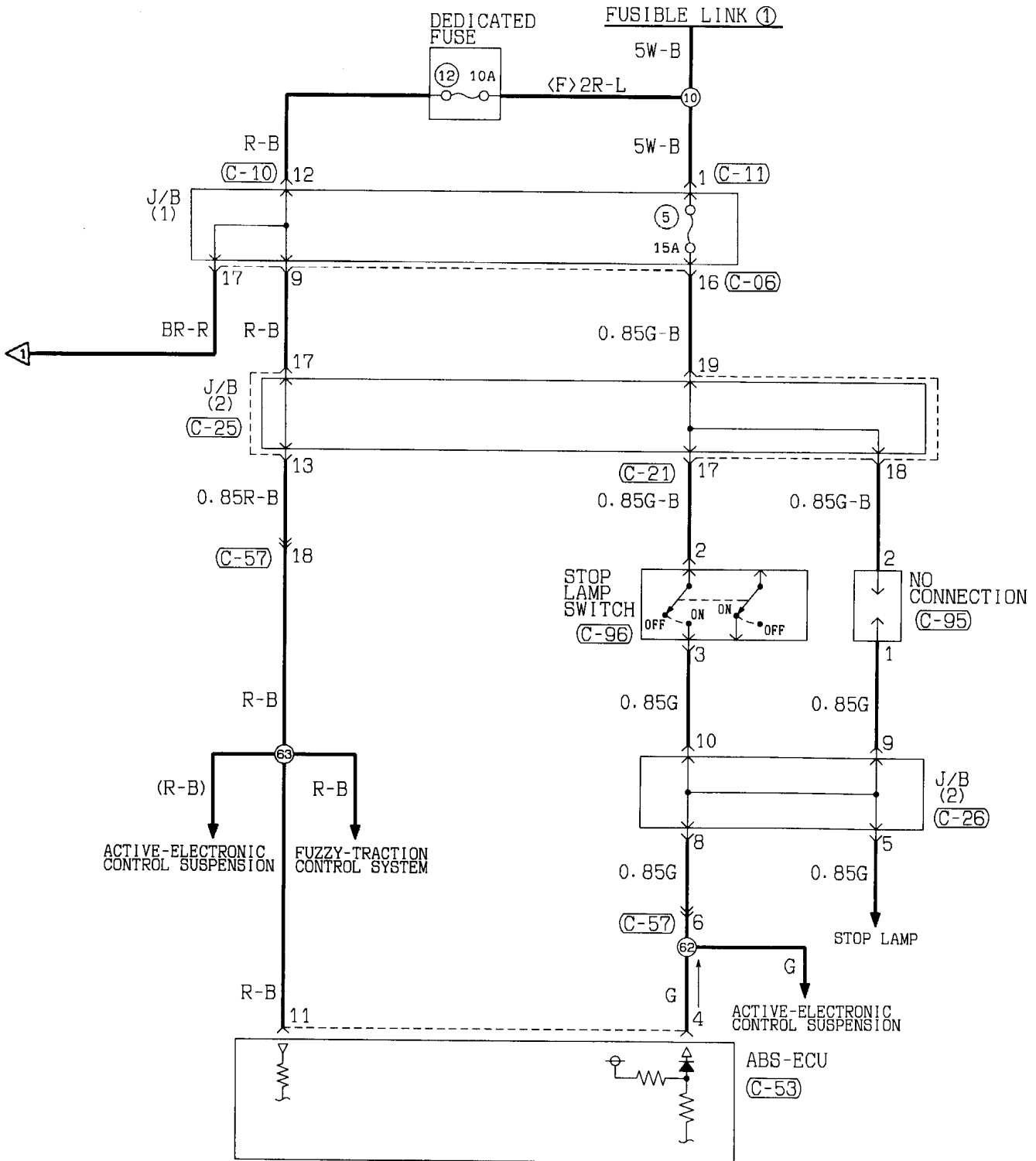
1	2	3	4	5	6
7	8	9	10	11	12
13	14				



(A-67)	(A-82)	(A-84)	(A-85)	(A-86)	(C-06)	(C-07)	(C-53)																																																																																															
<table border="1"><tr><td>1</td><td>2</td></tr><tr><td>3</td><td>4</td></tr></table>	1	2	3	4	<table border="1"><tr><td>1</td><td>2</td><td>3</td><td>4</td><td>5</td></tr><tr><td>6</td><td>7</td><td>8</td><td>9</td><td>10</td></tr></table>	1	2	3	4	5	6	7	8	9	10	<table border="1"><tr><td>(21)</td></tr><tr><td>(22)</td></tr></table>	(21)	(22)	<table border="1"><tr><td>1</td><td>2</td><td>3</td></tr><tr><td>4</td><td>5</td></tr></table>	1	2	3	4	5	<table border="1"><tr><td>1</td><td>2</td><td>3</td><td>4</td></tr><tr><td>5</td><td>6</td><td>7</td><td>8</td></tr></table>	1	2	3	4	5	6	7	8	<table border="1"><tr><td>1</td><td>2</td><td>3</td><td>4</td><td>5</td><td>6</td><td>7</td><td>8</td><td>9</td><td>10</td></tr><tr><td>11</td><td>12</td><td>13</td><td>14</td><td>15</td><td>16</td><td>17</td><td>18</td><td>19</td><td>20</td></tr></table>	1	2	3	4	5	6	7	8	9	10	11	12	13	14	15	16	17	18	19	20	<table border="1"><tr><td>1</td><td>2</td><td>3</td><td>4</td><td>5</td><td>6</td><td>7</td><td>8</td><td>9</td><td>10</td></tr><tr><td>11</td><td>12</td><td>13</td><td>14</td><td>15</td><td>16</td><td>17</td><td>18</td><td>19</td><td>20</td></tr></table>	1	2	3	4	5	6	7	8	9	10	11	12	13	14	15	16	17	18	19	20	<table border="1"><tr><td>1</td><td>2</td><td>3</td><td>4</td><td>5</td><td>6</td><td>7</td><td>8</td><td>9</td><td>10</td><td>11</td><td>12</td><td>13</td></tr><tr><td>14</td><td>15</td><td>16</td><td>17</td><td>18</td><td>19</td><td>20</td><td>21</td><td>22</td><td>23</td><td>24</td><td>25</td><td>26</td></tr></table>	1	2	3	4	5	6	7	8	9	10	11	12	13	14	15	16	17	18	19	20	21	22	23	24	25	26
1	2																																																																																																					
3	4																																																																																																					
1	2	3	4	5																																																																																																		
6	7	8	9	10																																																																																																		
(21)																																																																																																						
(22)																																																																																																						
1	2	3																																																																																																				
4	5																																																																																																					
1	2	3	4																																																																																																			
5	6	7	8																																																																																																			
1	2	3	4	5	6	7	8	9	10																																																																																													
11	12	13	14	15	16	17	18	19	20																																																																																													
1	2	3	4	5	6	7	8	9	10																																																																																													
11	12	13	14	15	16	17	18	19	20																																																																																													
1	2	3	4	5	6	7	8	9	10	11	12	13																																																																																										
14	15	16	17	18	19	20	21	22	23	24	25	26																																																																																										
(C-54)	(C-57)																																																																																																					
<table border="1"><tr><td>31</td><td>32</td><td>33</td><td>34</td><td>35</td><td>36</td><td>37</td><td>38</td><td>39</td><td>40</td><td>41</td></tr><tr><td>42</td><td>43</td><td>44</td><td>45</td><td>46</td><td>47</td><td>48</td><td>49</td><td>50</td><td>51</td><td>52</td></tr></table>	31	32	33	34	35	36	37	38	39	40	41	42	43	44	45	46	47	48	49	50	51	52	<table border="1"><tr><td>1</td><td>2</td><td>3</td><td>4</td><td>5</td><td>M</td><td>6</td><td>7</td><td>8</td><td>9</td><td>10</td></tr><tr><td>11</td><td>12</td><td>13</td><td>14</td><td>15</td><td>16</td><td>17</td><td>18</td><td>19</td><td>20</td><td>21</td><td>22</td></tr></table>	1	2	3	4	5	M	6	7	8	9	10	11	12	13	14	15	16	17	18	19	20	21	22																																																								
31	32	33	34	35	36	37	38	39	40	41																																																																																												
42	43	44	45	46	47	48	49	50	51	52																																																																																												
1	2	3	4	5	M	6	7	8	9	10																																																																																												
11	12	13	14	15	16	17	18	19	20	21	22																																																																																											

ANTI-SKID BRAKE SYSTEM
 <2WD> (L.H. drive vehicles) (CONTINUED)





(C-06)

1	2	3	4	M	5	6	7	8	
9	10	11	12	13	14	15	16	17	18

(C-10)

1	2	3	4	M	5	6	7	8	
9	10	11	12	13	14	15	16	17	18

(C-11)

1

(C-21)

1	2	3	4	5	M	6	7	8	9	10	
11	12	13	14	15	16	17	18	19	20	21	22

(C-25)

1	2	3	4	5	M	6	7	8	9	10	
11	12	13	14	15	16	17	18	19	20	21	22

(C-26)

1	2	3	4	5	M	6	7	8	9	10	
11	12	13	14	15	16	17	18	19	20	21	22

(C-53)

1	2	3	4	5	6	7	8	9	10	11	12	13
14	15	16	17	18	19	20	21	22	23	24	25	26

(C-57)

1	2	3	4	5	M	6	7	8	9	10	
11	12	13	14	15	16	17	18	19	20	21	22

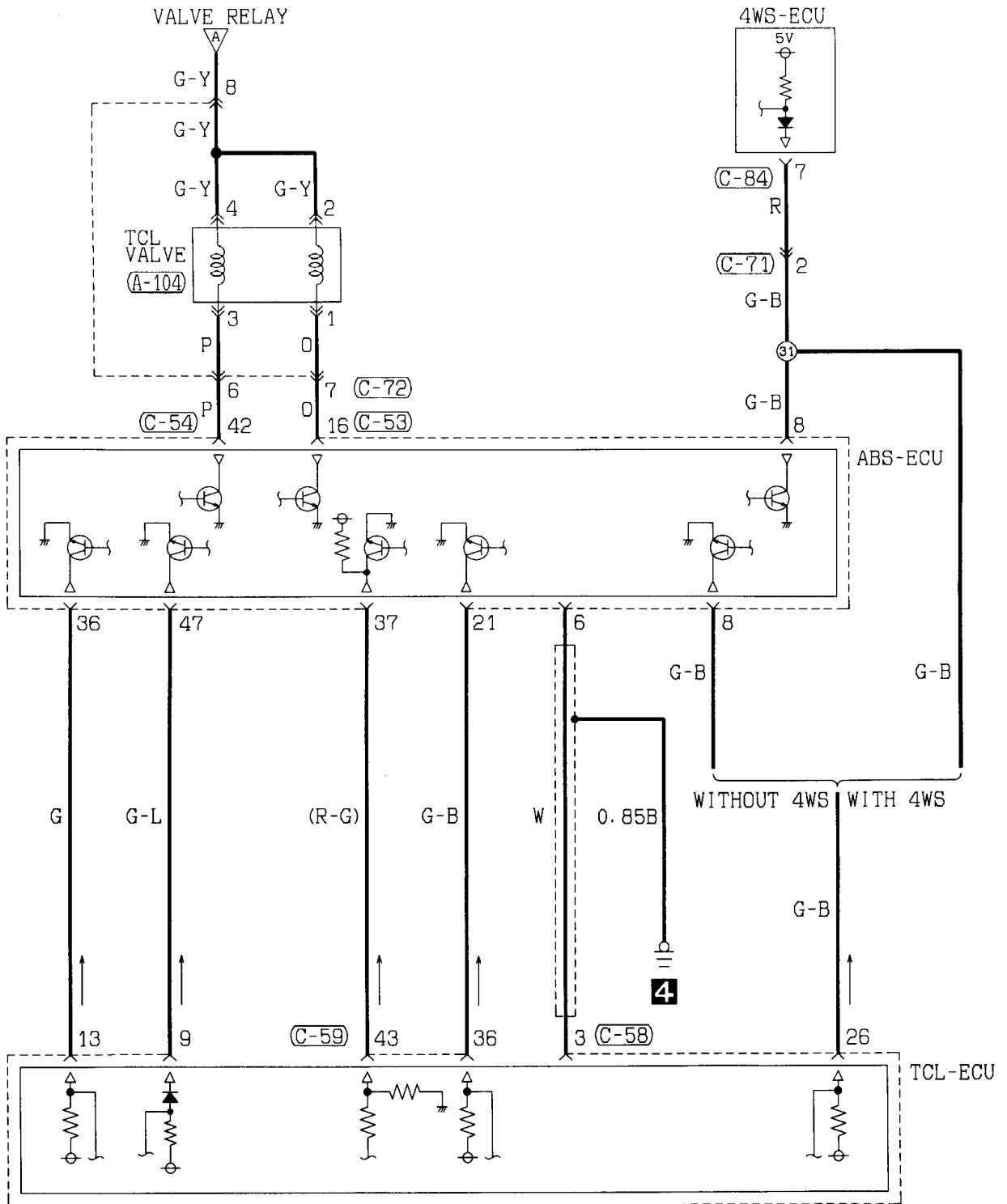
(C-95)

1

(C-96)

1	2
3	4

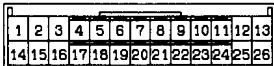
ANTI-SKID BRAKE SYSTEM <2WD> (L.H. drive vehicles)
(CONTINUED)



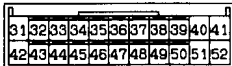
A-104



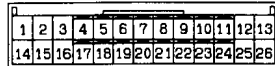
(C-53)



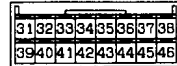
(C-54)



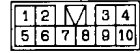
(C-58)



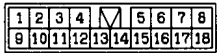
(C-59)



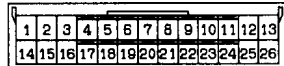
(C-71)



(C-72)

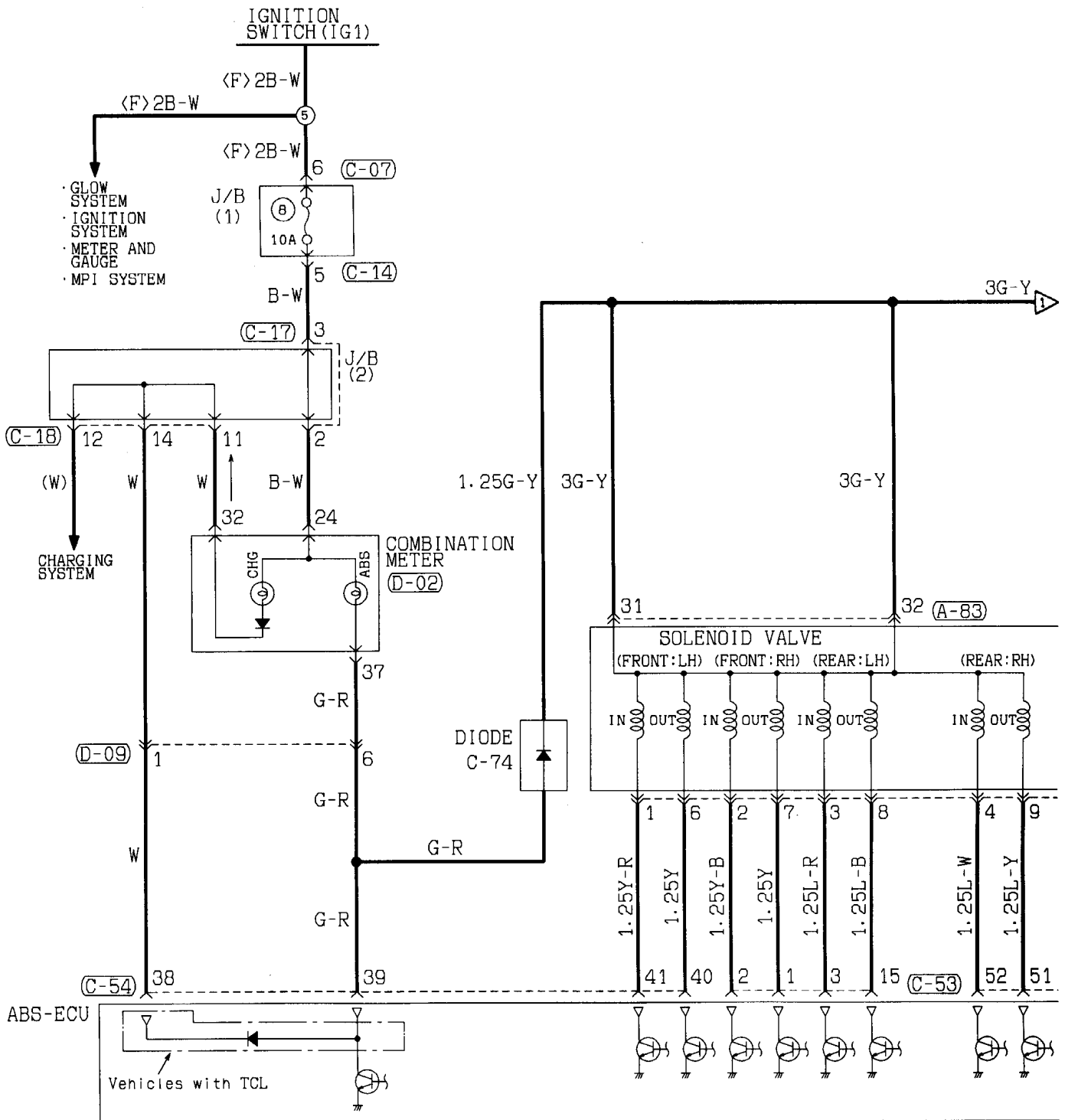


(C-84)



NOTES

ANTI-SKID BRAKE SYSTEM
2WD<R. H. drive vehicles>



(A-83)

(C-07)

(C-14)

(C-17)

(C-18)

(C-53)

31	32
----	----

1	2	3	4
5	6	7	8
9	10		

1	2	3	4	5	M	6	7	8	9	10	
11	12	13	14	15	16	17	18	19	20	21	22

1	2	3	4	5	M	6	7	8	9	10	
11	12	13	14	15	16	17	18	19	20	21	22

1	2	3	4	5	M	6	7	8	9	10	
11	12	13	14	15	16	17	18	19	20	21	22

1	2	3	4	5	6	7	8	9	10	11	12	13
14	15	16	17	18	19	20	21	22	23	24	25	26

(C-54)

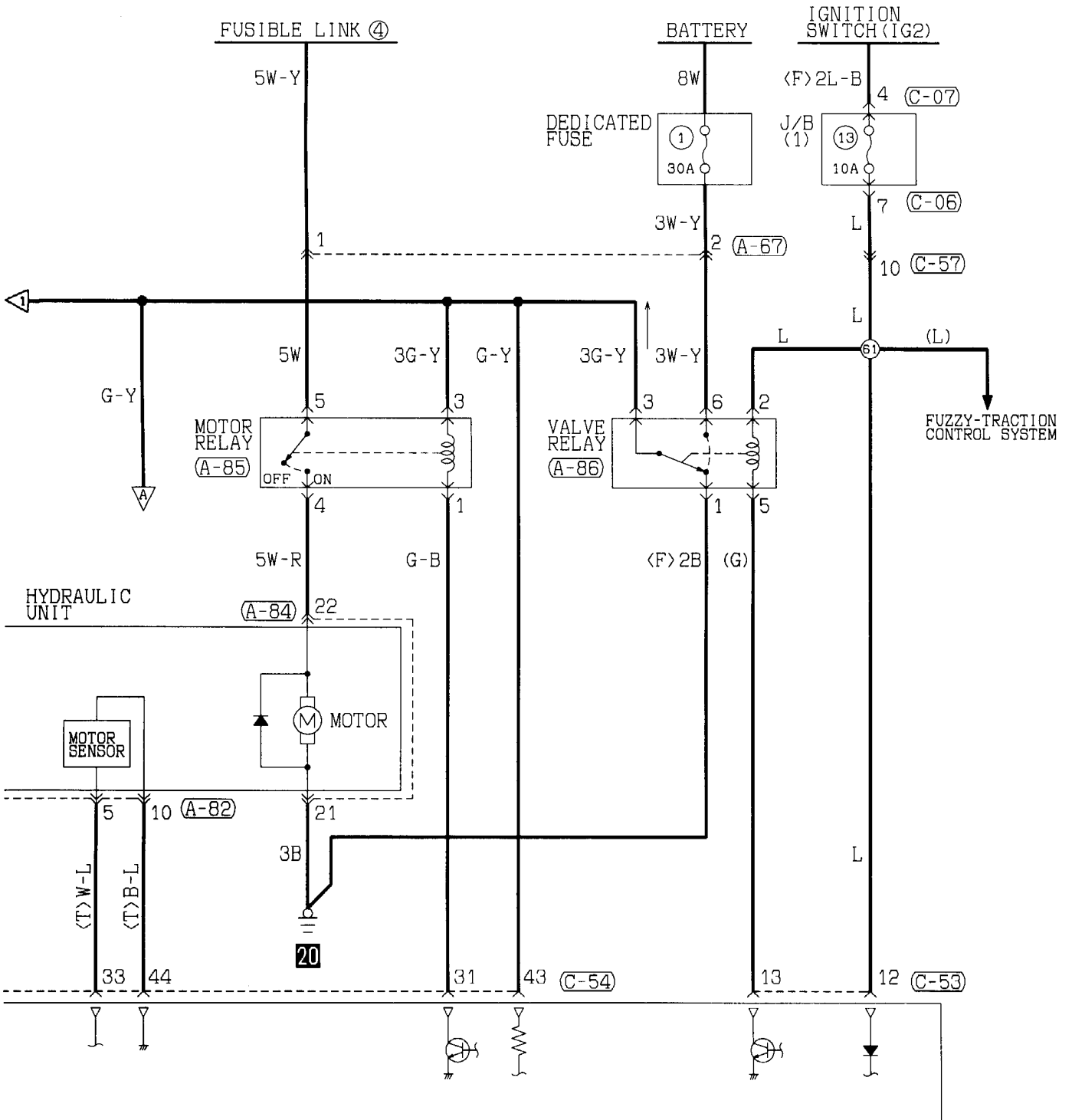
(D-02)

(D-09)

31	32	33	34	35	36	37	38	39	40	41
42	43	44	45	46	47	48	49	50	51	52

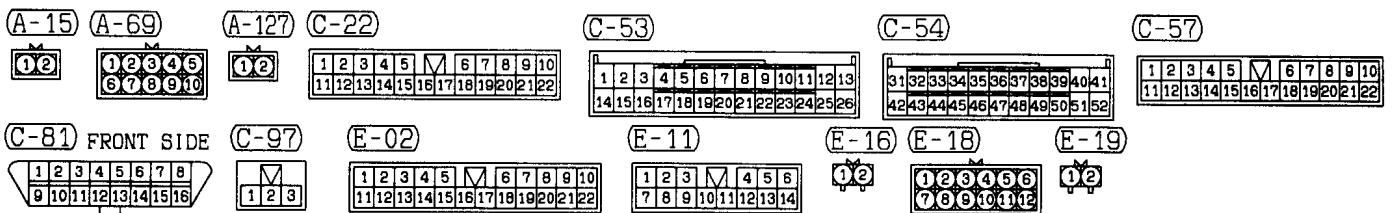
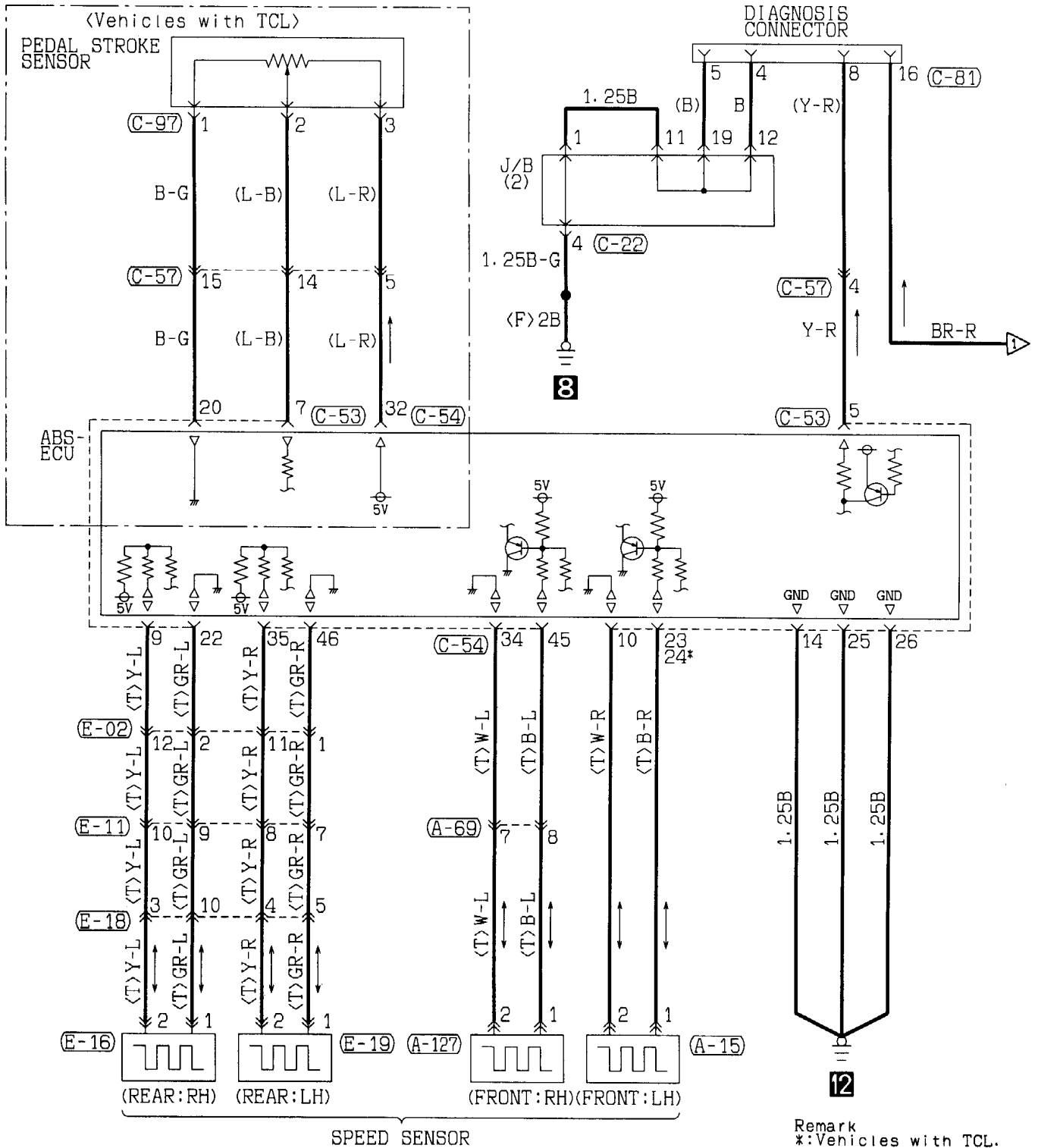
21	22	23	24	25	26	27	28
29							
30	31	32	33	34	35	36	37

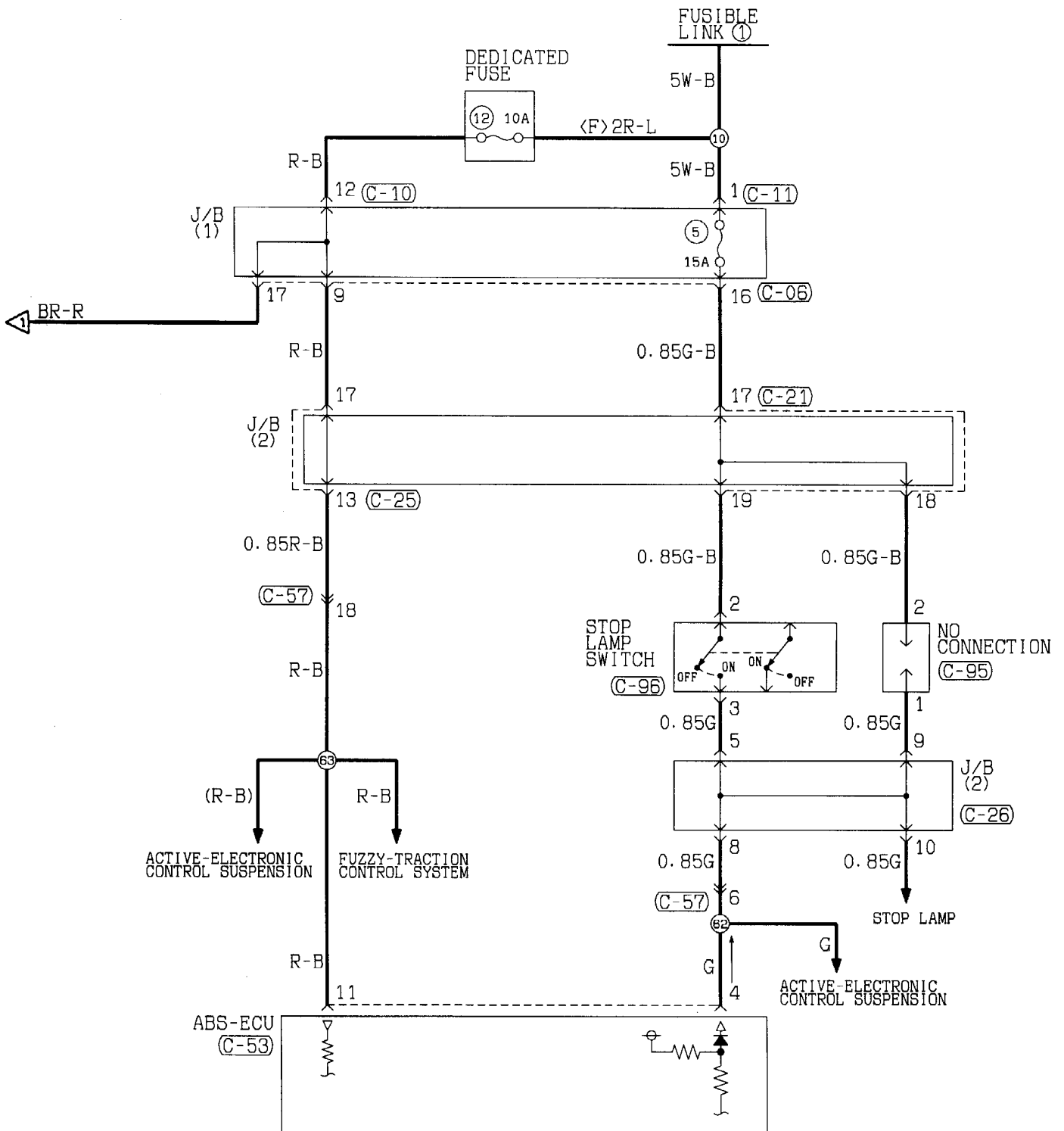
1	2	3	M	4	5	6	
7	8	9	10	11	12	13	14



(A-67)	(A-82)	(A-84)	(A-85)	(A-86)	(C-06)	(C-07)	(C-53)
1 2	1 2 3 4 5 6 7 8 9 10	(21) (22)	1 2 3 4 5	1 2 3 4 5 6	1 2 3 4 5 6 7 8 9 10 11 12 13 14 15 16 17 18	1 2 3 4 5 6 7 8 9 10	1 2 3 4 5 6 7 8 9 10 11 12 13 14 15 16 17 18 19 20 21 22 23 24 25 26
(C-54)	(C-57)	Wire colour code					
31 32 33 34 35 36 37 38 39 40 41 42 43 44 45 46 47 48 49 50 51 52	1 2 3 4 5 6 7 8 9 10 11 12 13 14 15 16 17 18 19 20 21 22	B: Black LG: Light green G: Green L: Blue BR: Brown O: Orange GR: Gray R: Red W: White SB: Sky blue P: Pink Y: Yellow V: Violet					

ANTI-SKID BRAKE SYSTEM (2WD)
(R.H. drive vehicles) (CONTINUED)





(C-06)

1	2	3	4	5	6	7	8		
9	10	11	12	13	14	15	16	17	18

(C-10)

1	2	3	4	5	6	7	8		
9	10	11	12	13	14	15	16	17	18

(C-11)

1

(C-21)

1	2	3	4	5	6	7	8	9	10		
11	12	13	14	15	16	17	18	19	20	21	22

(C-25)

1	2	3	4	5	6	7	8	9	10		
11	12	13	14	15	16	17	18	19	20	21	22

(C-26)

1	2	3	4	5	6	7	8	9	10		
11	12	13	14	15	16	17	18	19	20	21	22

(C-53)

1	2	3	4	5	6	7	8	9	10	11	12	13
14	15	16	17	18	19	20	21	22	23	24	25	26

(C-57)

1	2	3	4	5	6	7	8	9	10		
11	12	13	14	15	16	17	18	19	20	21	22

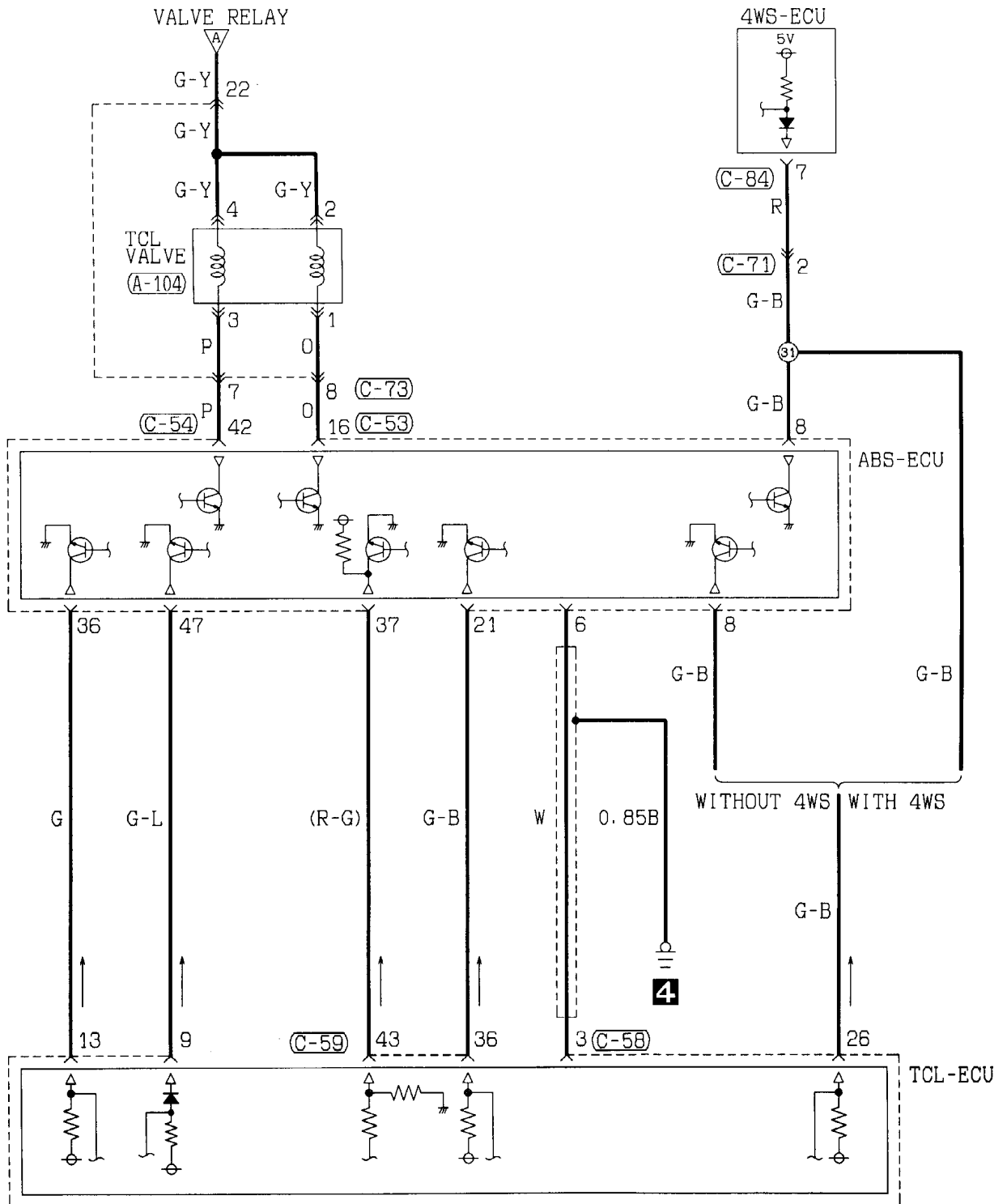
(C-95)

1
2

(C-96)

1	2
3	4

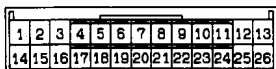
ANTI-SKID BRAKE SYSTEM <2WD> (R. H. drive vehicles)
(CONTINUED)



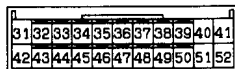
(A-104)



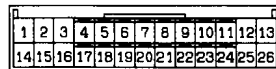
(C-53)



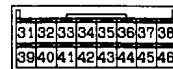
(C-54)



(C-58)



(C-59)



(C-71)



(C-73)



(C-84)

